

All Seasons Veterinary Care Monthly Newsletter



We're (Almost) Halfway There!

We're nearly halfway through the year! Can you believe it? As the sun shines brighter and everyone starts getting outside and socializing again, it's the perfect time for a friendly reminder to **keep your furry friends up to date on their vaccinations, wellness exams, and prevention measures.**

Annual vaccinations are absolutely essential for **keeping your pet healthy** and **ensuring the well-being of our entire community.** No matter their age, size, breed, or type—every pet needs a thorough nose-to-tail check-up at least once a year!

Regular wellness exams help catch any potential health issues before they become serious. And let's not forget: **prevention is truly the best form of protection** for your beloved companions.

Speaking of prevention, did you know all pets **need wellness bloodwork screenings once per year**, regardless of age. It provides key information about your pet's internal health that we may not otherwise detect. If everything looks good, it serves as an excellent baseline for future changes, helping us catch issues early!

In addition to wellness bloodwork screening, it's crucial to **stay on top of heartworm and intestinal parasite screenings** as well. These tests help ensure that your pet isn't harboring any unwanted guests that could affect their health—and yours too! **These screenings should be done yearly** and are normally done with your pet's annual wellness visit.

So let's make this season about health and happiness for our pets! **Get those annual wellness appointments booked today;** they'll thank you with wagging tails and purring cuddles!

Spread the Word!

**We're now offering
FREE Wellness Exams to
New Clients!**

**Spread the word and
tell your pet-loving
friends about us - we'd
love to meet them!!**

Arthritis Awareness Month

As we observe Arthritis Awareness Month this May, it's crucial to recognize that arthritis doesn't only affect humans; our beloved pets are also at risk.

One of the most common forms of arthritis in pets is Osteoarthritis (OA), a condition that occurs when the protective cartilage in the joints wears down, leading to painful bone-on-bone friction. This chronic pain can significantly impact your pet's quality of life, making it difficult for them to engage in activities they once enjoyed, such as walks and playtime.

It's a common misconception that OA only affects older animals; however, it can occur in pets of any age, breed, or size. OA is a progressive condition that can worsen over time without appropriate treatment.

There's many different symptoms to look out for in your pets when watching for OA. Some can be isolated events but recurring issues may point to OA in your pet. A key sign of osteoarthritis in pets is limping or favoring a leg, showing reluctance to put weight on it, jump, or climb stairs. Pets often experience stiffness after resting, struggling to rise from lying down or taking longer to warm up during walks. A sudden drop in activity or reluctance to engage in favorite activities may indicate

osteoarthritis; pets may avoid running or playing fetch. Chronic pain can lead to behavioral changes such as irritability, restlessness, and seeking solitude; some pets might become aggressive when touched near painful areas. In advanced stages, affected joints may swell, feel warm, and visibly enlarge, causing discomfort and restricting motion further.

Librela for Dogs

Librela is a monthly injection administered at a veterinary office that provides long-term pain control for osteoarthritis (OA) in dogs.

Clinical studies have shown that Librela effectively manages OA pain, helping dogs become more active and improving their overall quality of life. It is a monoclonal antibody specifically targeting a key driver of OA pain. By reducing pain signals, it makes it easier for your dog to move and play. With long-lasting relief, your dog can feel better, and you can feel good about their treatment, allowing you to return to the activities you both love.



Solensia for Cats

Solensia is also a monthly injection given at the veterinarian's office, but it is for cats to control OA pain. Solensia works like your cat's naturally produced antibodies to reduce pain signals. It is a type of medicine called a biologic (a protein, not a chemical) that targets the root cause of your cat's OA pain.

In a three-month study, 77% of cat owners observed improvements in signs of pain when their cats were treated monthly with Solensia. Solensia can help your cat feel better in their daily life and prevent OA pain from affecting the unique bond you share with your cat.



755 W Bridge Road, Polk City 50226
515-531-VETS (8387)
www.allseasonsveterinarycare.com
records@allseasonsveterinarycare.com

MAY 2025 | VOLUME 7



* Spring Safety *

Outdoor Safety

Supervise outdoor activities to prevent accidents or injuries. Provide plenty of shade and downtime to avoid overexertion, as dogs don't know how to limit themselves. Ensure your pet stays hydrated with constant access to water. Check that all of your gates, fences, and confined areas are closed firmly before leaving your property.

This Leash Was Made for Walking

Keep your pets leashed at all times when walking, whether in town or on local trails, to ensure their safety and that of others. This not only prevents unexpected encounters with other animals or people but also allows your furry friends to explore their surroundings without running into danger.

Spring Cleaning

Use this time to deep clean your pet supplies. Wash dog beds and blankets, clean and disinfect kennels, deep clean litter boxes (or buy a new one), and vacuum cat trees and pet furniture.

Know Your Labels

Store lawn and garden products out of pets' reach. Fertilizers are generally safe when spread in the yard but can be dangerous in large amounts. Always read labels to ensure they are safe.

Be a Pesticide Pro

Be aware of common ingredients like glyphosate, found in many weed killers and linked to health issues in pets. Adhere to the product's guidelines for application, dilution, and timing of pet access to the treated area.

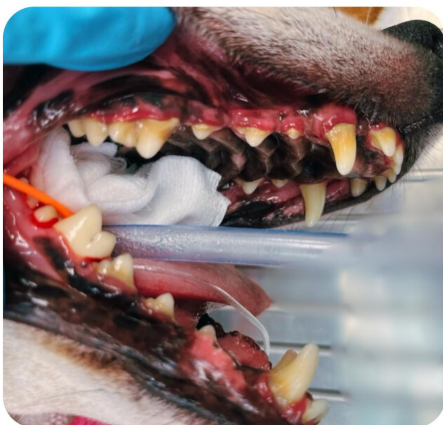
Garden Cautiously

Before planting, research what plants you're planning on growing. Some plants such as lilies, daffodils, azaleas, crocuses, and sago palm are all extremely toxic to pets.

Mind the Mulch

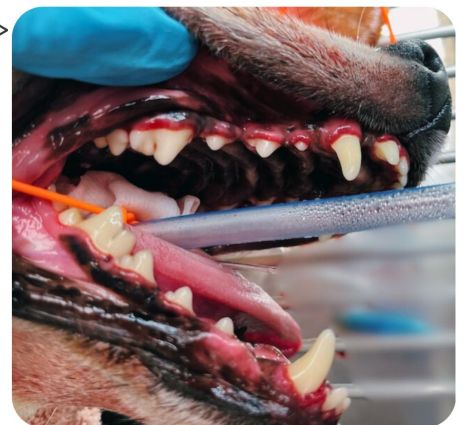
Certain types of mulch can be hazardous. Cocoa bean mulch is made from discarded cocoa bean shells or hulls, and have an aroma that can seem appetizing to pets. Plus, ingesting any type of mulch can lead to gastrointestinal obstructions.

The Magic of Pet Dentistry



◀ Before & After ▶

Dental health for pets is so important, and seeing the difference between these two images truly highlights how effective routine care can be for your furry friends. Just look at those sparkling teeth and fresh breath! Regular dental check-ups can prevent serious issues down the line, ensuring that your pet not only looks great but feels great too.



755 W Bridge Road, Polk City 50226
515-531-VETS (8387)
www.allseasonsveterinarycare.com
records@allseasonsveterinarycare.com

MAY 2025 | VOLUME 7

